

ProPower 1PH

Solar Hybrid Generator

The Prolectric ProPower is a solar hybrid generator that has been designed to provide a sustainable temporary power solution for the construction, infrastructure, rail and events sectors, amongst others.

The ProPower packs the latest solar and Li-ion battery storage technology onto a static skid or trailer mount – making it a clean, cost-effective and easy-to-deploy solar hybrid generator that can significantly cut your fuel usage and carbon emissions.

The ProPower has a compact footprint, making it easy and quick to set up on smaller compounds. It is available with the ERICA smart distribution board that measures and records how much and where you consume power on site. The ProPower can charge electric plant equipment and up to 6 site welfare cabins 24 hours a day, 7 days a week. The ProPower can be customised to power EV charging equipment.

Each ProPower is equipped with remote monitoring and GPS tracking, so it can be switched on and off remotely, and key data such as power generated/consumed can be monitored and recorded. Environmental reports can be automatically produced to track energy performance and carbon reductions compared to conventional generators.

The inclination of the ProPower solar panels can be adjusted for optimum performance, leading to an increase in solar generation of up to 15%.

Game-changing remote monitoring & management

Manage your ProPower from anywhere, anytime using the portals' powerful remote-control functionality.

[Find out more](#)



Reduced Emissions

Reduced fuel usage and carbon emissions.



Reduced Refuelling

HVO or fuel option cuts emissions by up to 90%.



Reduced Noise

Silent overnight power from battery storage.



Minimal Maintenance

Reduced generator run-time means less maintenance.

Our customers include



1

17.5kVA -
22.5kVA
peak
output

3040W
PV peak

510L
fuel tank
built into
skid mount

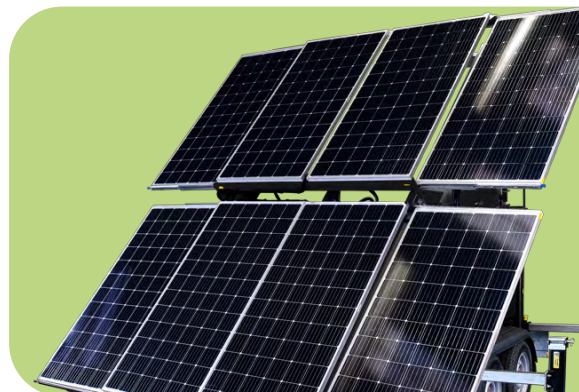
3



ProPower 1PH

Solar Hybrid Generator

Skid or
trailer
mounted



General Specification

Generator	17.5 kVA to 22.5 kVA (1PH)
Battery capacity	35 kWh
Socket outputs *hardwire option available on request	3 x 32A / 230V 1PH 1 x 125A / 230V 1PH
Internal tank size	130L (30-45hours run time, load dependent)
Wind loading	80 km/h

Solar Panels

PV peak	380W x 8
Panel extension	Hydraulic
Safety	Auto lock /sensor
Charge time	3 hours (approx. from empty)

Dimensions

(1) Skid Mounted
(2) Trailer Mounted

Deployed dimensions	(1) 4690 (L) x 4155 (W) x 3670 (H) mm (2) 5710 (L) x 4040 (W) x 3762 (H) mm
Stowed dimensions	(1) 3300 (L) x 2150 (W) x 2400 (H) mm (2) 5710 (L) x 2150 (W) x 2489 (H) mm
Net weight *with full fuel tank	(1) 4130 kg (2) 3310 kg

